



## Application Note

**App. Note Number:** 1012

**Title:** Downloading data with  
HyperTerminal

**Description:** This document will describe to the user how to download data to a CPU from an XL Series DCP using HyperTerminal

**Product:** XL Series DCP's

**Author:** Brian Shupe

**Date:** August 2008

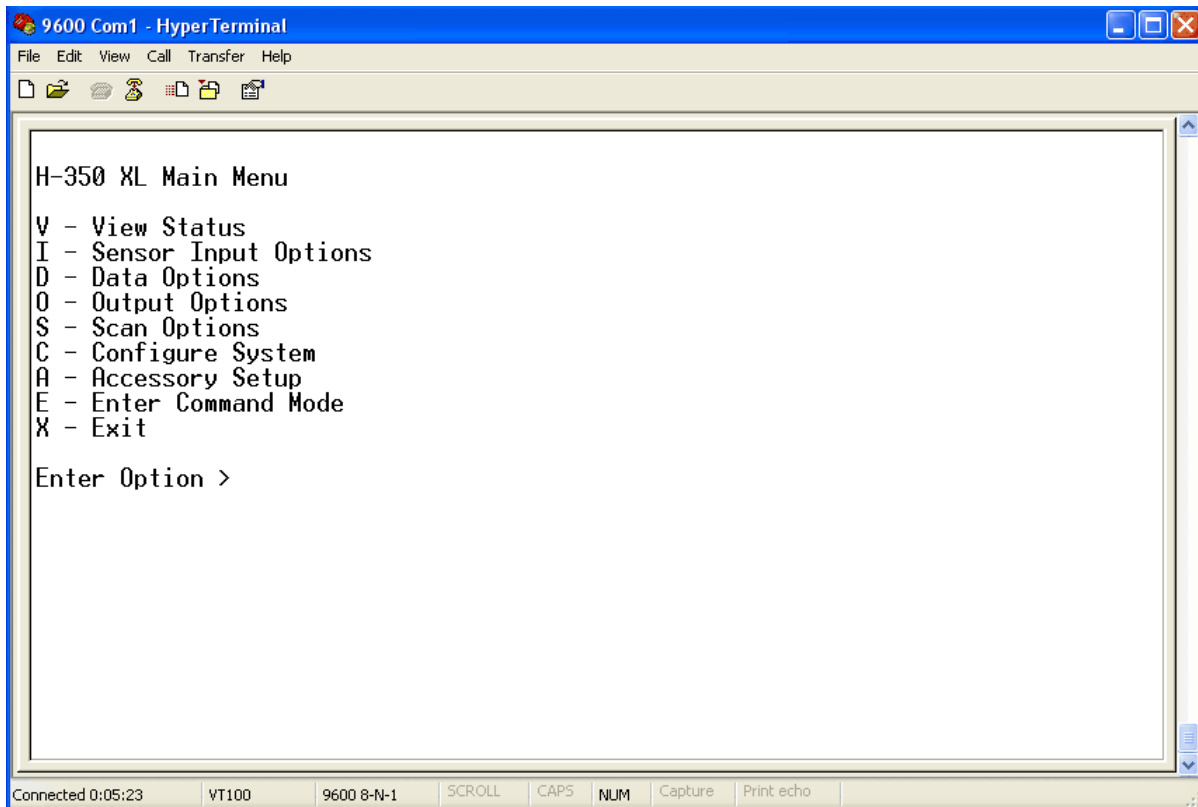
**Revision:** 2.00

75 West 100 South  
Logan, UT 84321 USA  
Phone: (435) 753-2212  
Fax: (435) 753-7669  
Web: [www.waterlog.com](http://www.waterlog.com)

## 1.0 Introduction:

This document was written for the purpose of explaining how to download data from an XL series DCP using HyperTerminal. This document does not explain how to connect to the XL logger using Hyperterminal. This document assumes that the user is connected to the XL series DCP via the RS232 cable and com port and is successfully communicating. Refer to the user manual Chapter 4 for details on connecting and communicating to the XL series DCP.

The user will see the below screen once connected and communicating with the XL series DCP. Pressing the ENTER key will refresh this screen or reconnect to the XL if it has timed out.



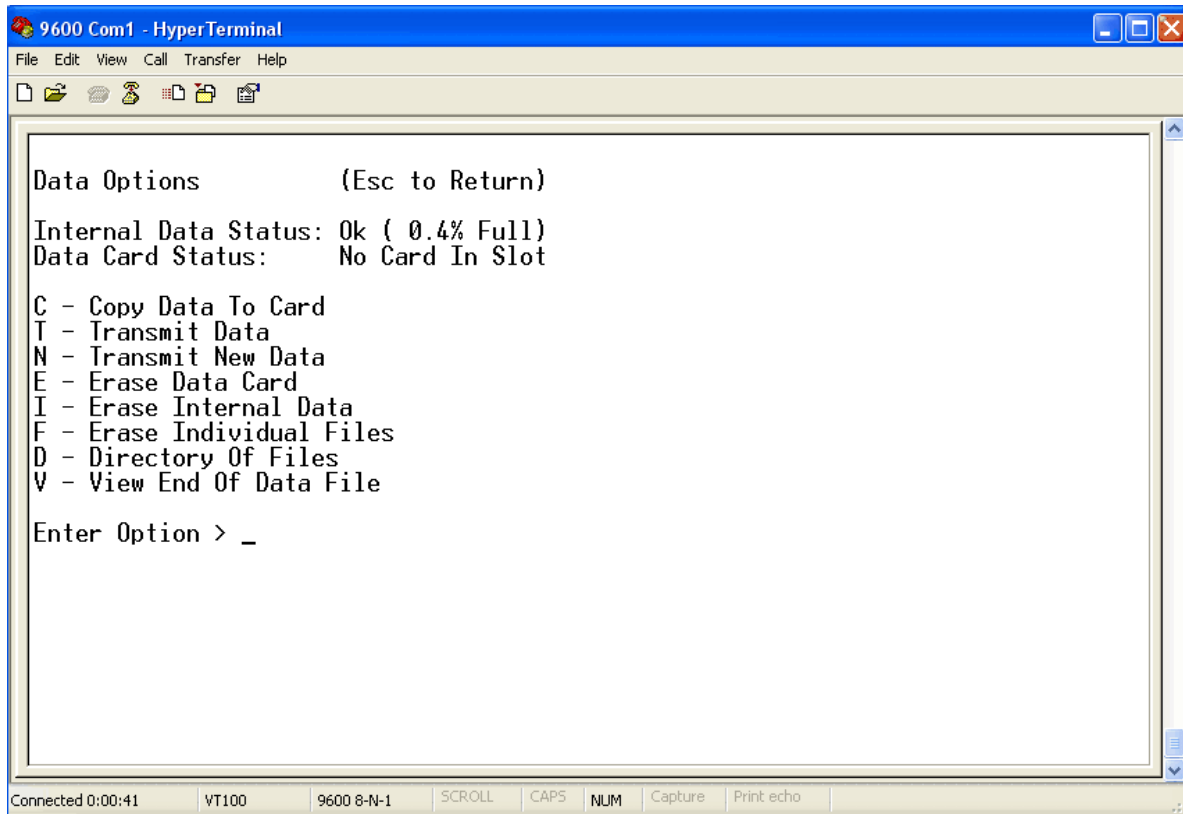
The image shows a screenshot of a HyperTerminal window titled "9600 Com1 - HyperTerminal". The window has a menu bar with "File", "Edit", "View", "Call", "Transfer", and "Help". Below the menu bar is a toolbar with icons for file operations. The main display area shows the following text:

```
H-350 XL Main Menu  
V - View Status  
I - Sensor Input Options  
D - Data Options  
O - Output Options  
S - Scan Options  
C - Configure System  
A - Accessory Setup  
E - Enter Command Mode  
X - Exit  
  
Enter Option >
```

At the bottom of the window, there is a status bar with the following information: "Connected 0:05:23", "VT100", "9600 8-N-1", "SCROLL", "CAPS", "NUM", "Capture", and "Print echo".

## 1.1 Preparing the XL for data transfer

From the above main menu press the D key for “D - Data Options” and this will take the user to the Data Options menu screen. While entering this screen the user will see the message “Please Wait...” until the XL has obtained the internal and external card statuses. From the Data Options menu press the T key for “T - Transmit Data” or the N key for “N - Transmit New Data” depending whether the user wants just the new data file or wants to select which data file to download.



The screenshot shows a HyperTerminal window titled "9600 Com1 - HyperTerminal". The window contains the following text:

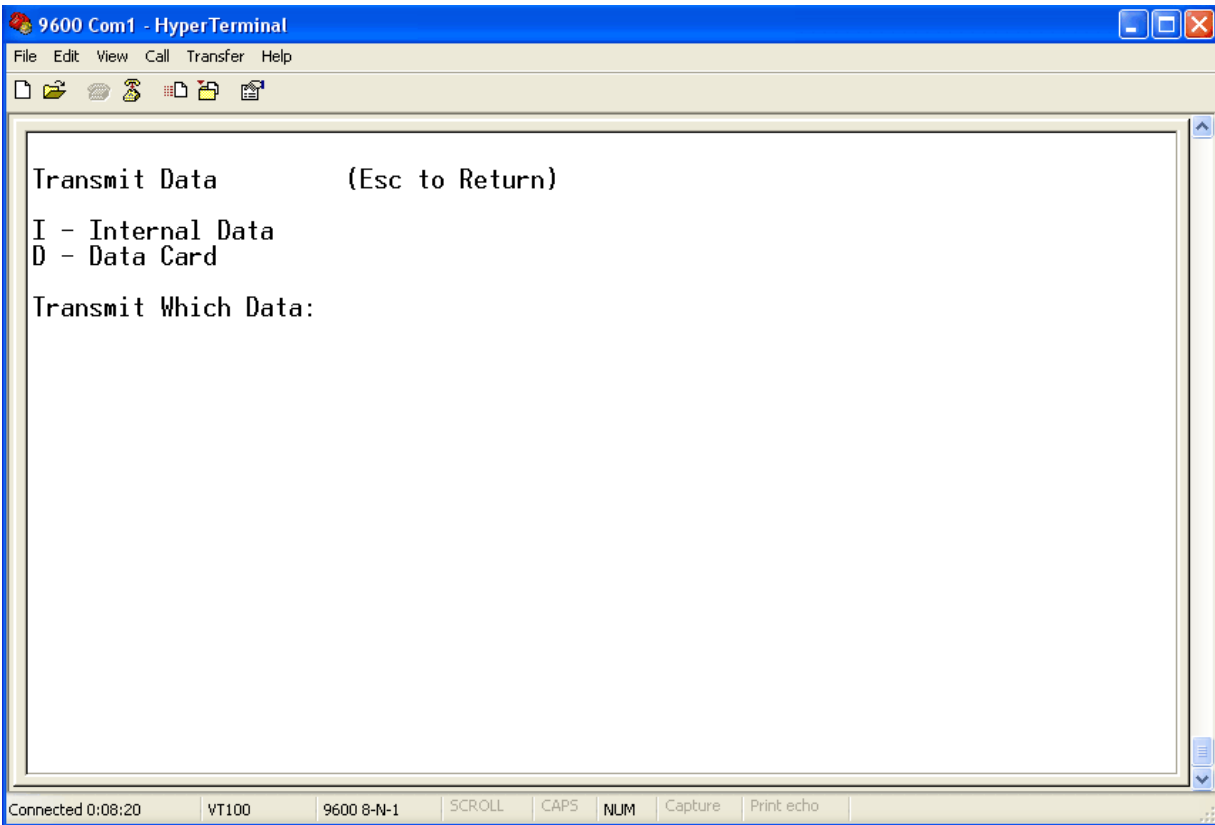
```
Data Options          (Esc to Return)
Internal Data Status: Ok ( 0.4% Full)
Data Card Status:    No Card In Slot

C - Copy Data To Card
T - Transmit Data
N - Transmit New Data
E - Erase Data Card
I - Erase Internal Data
F - Erase Individual Files
D - Directory Of Files
V - View End Of Data File

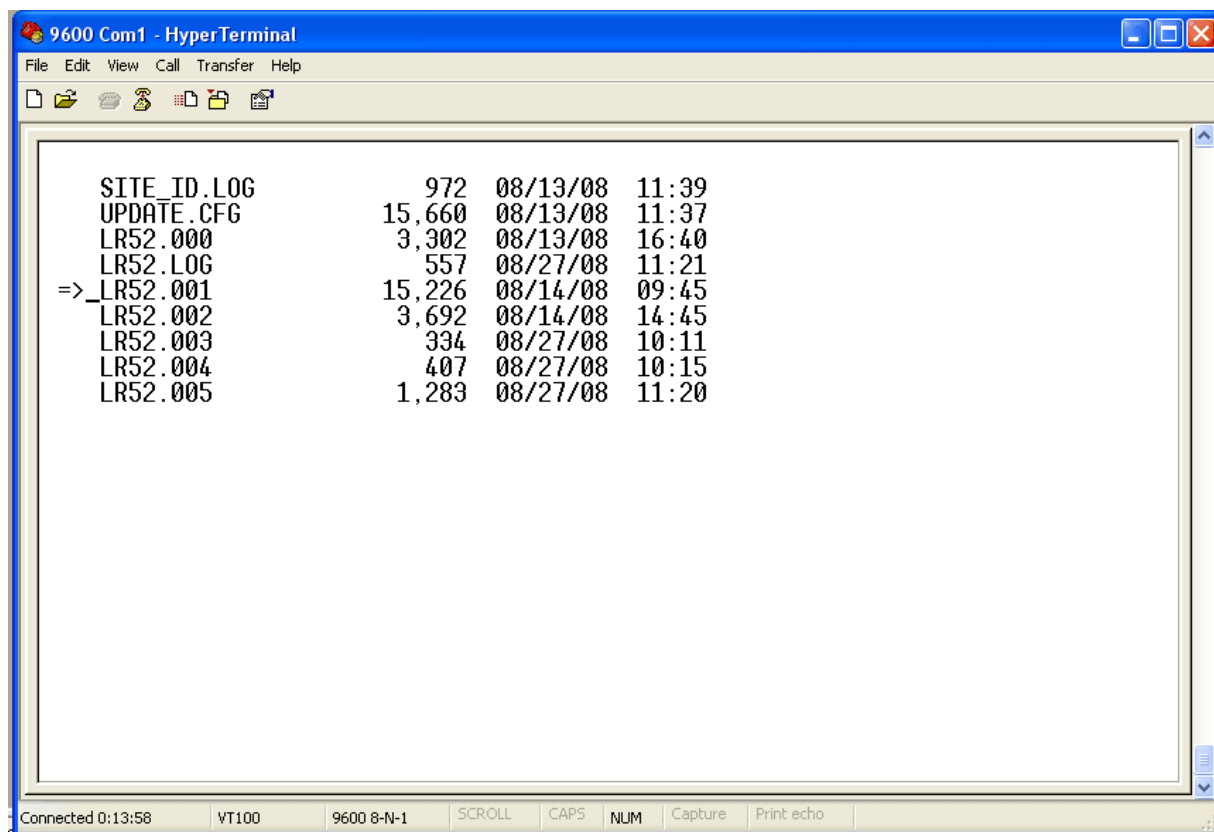
Enter Option > _
```

The window also shows a menu bar with "File", "Edit", "View", "Call", "Transfer", and "Help". At the bottom, there is a status bar with the following information: "Connected 0:00:41", "VT100", "9600 8-N-1", "SCROLL", "CAPS", "NUM", "Capture", and "Print echo".

After pressing the T key the user will see the below screen and will need to chose the card to download from which will be the internal since that is where the logging files are stored. Press the I key to select the internal card.



The user will then see the below screen and must use the arrows keys to move prompt to the file to download and then press ENTER to select the file to download.



After selecting the desired file to download the user will see the following prompt.

```
ASCII Transfer or XModem Transfer (A/X)?
```

### 1.2 Transfer format

The user can chose between ASCII/XModem transfer. The ASCII transfer prints the file directly to the HyperTerminal screen which we will discuss and the XModem transfers the file and does not print to the screen. It does not really matter which transfer protocol is used, the user can decide which protocol is preferred. I will discuss how to use both methods. After pressing the A/X key the user will see the following prompt.

```
Transmit Complete File or from Selected Date? (C/D)?
```

The user can chose to download the complete file or from a date in the file that was selected. After selecting this option depending on what transfer protocol was selected the user will need to do one of the following.

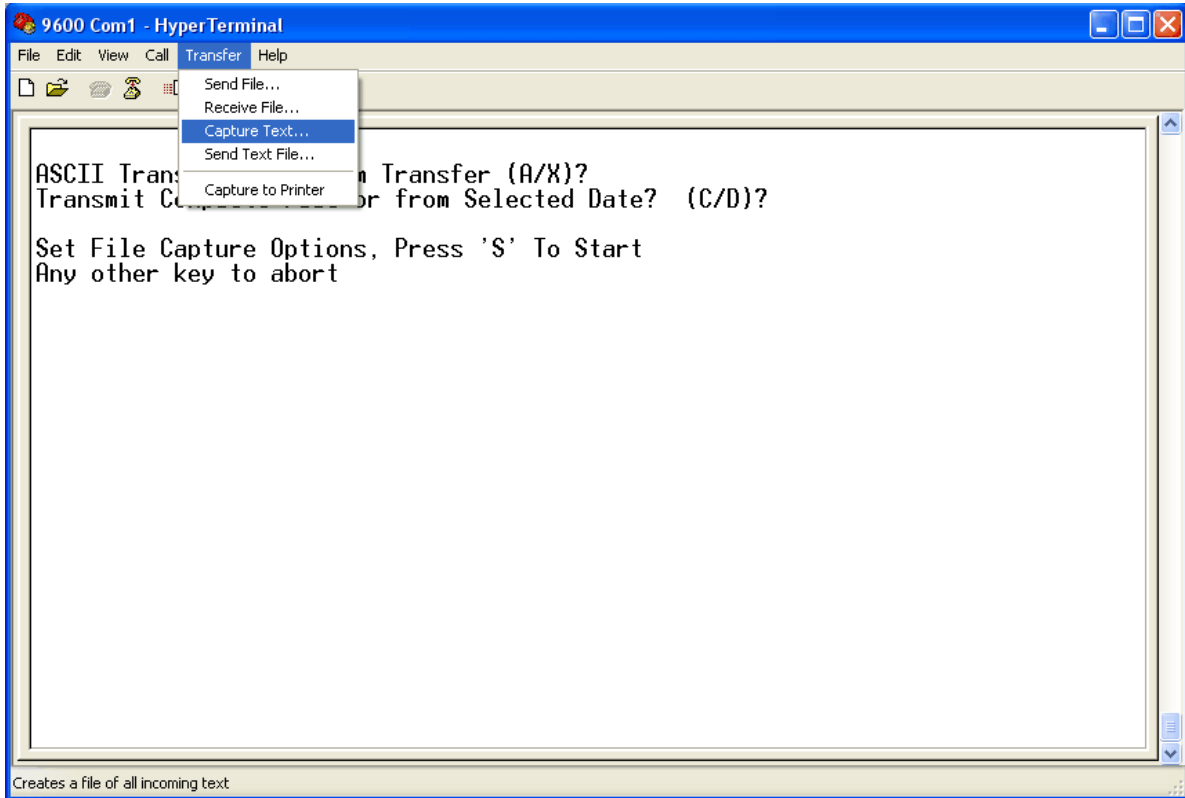
### 1.3 ASCII Transfer

If the user selected the ASCII format earlier the user will see the following prompt.

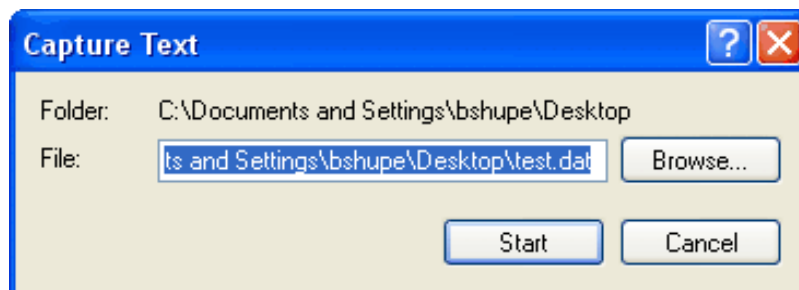
```
Set File Capture Options, Press 'S' To Start
```

Any other key to abort

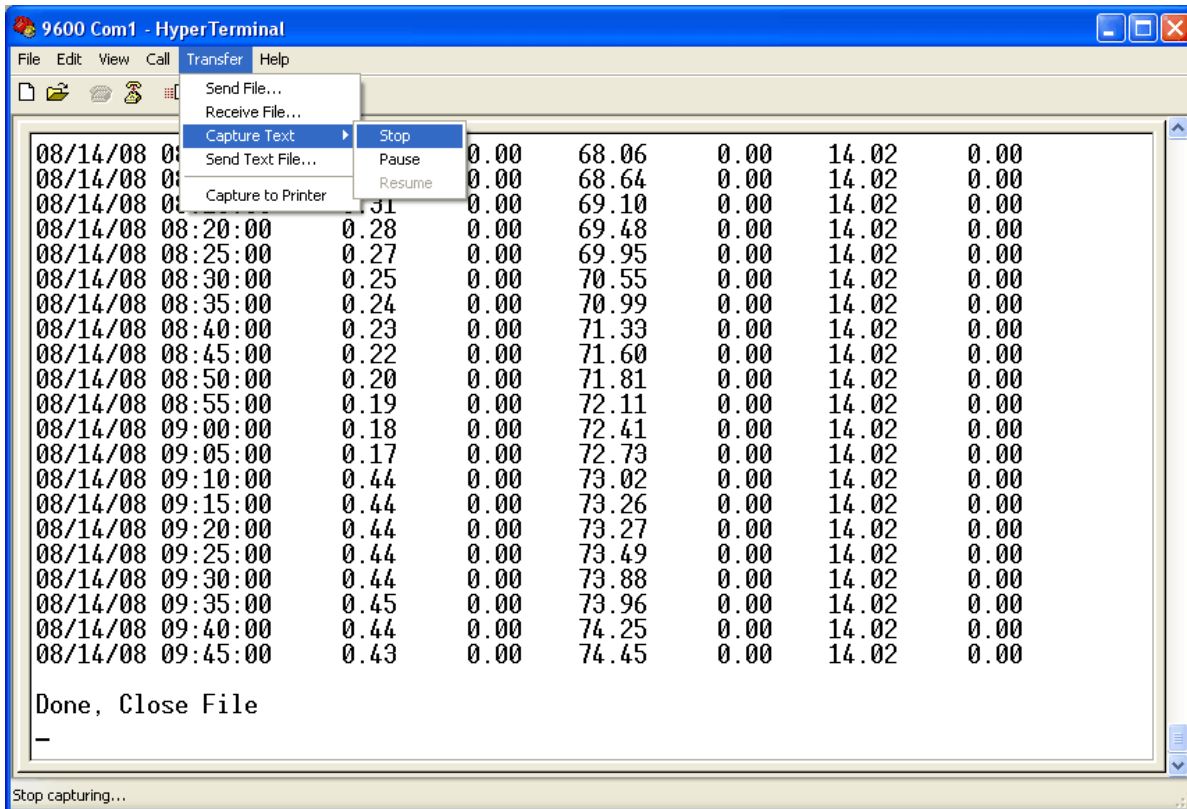
Before pressing the S key to start the user must turn on the HyperTerminal file capture option. To do this click on the *Transfer* option on the HyperTerminal toolbar at top of window and click *Capture Text*. As shown below.



After clicking on *Capture Text* the user will see the following screen.



Click the *Browse* button to select where to put the captured text and what to name the file. Then click *Start* to start capturing the text that is sent to the screen. Now the capture is on and everything that is printed to the HyperTerminal screen will be saved to the file that the user created or selected. The user can now press the S key to start the transfer from the XL. The user will see the data scrolling on the screen and once it is done the user can turn off the file capture option. To do this click on *Transfer* and then move mouse to *Capture* and click on *Stop* to stop the capture and close the file. As shown below.



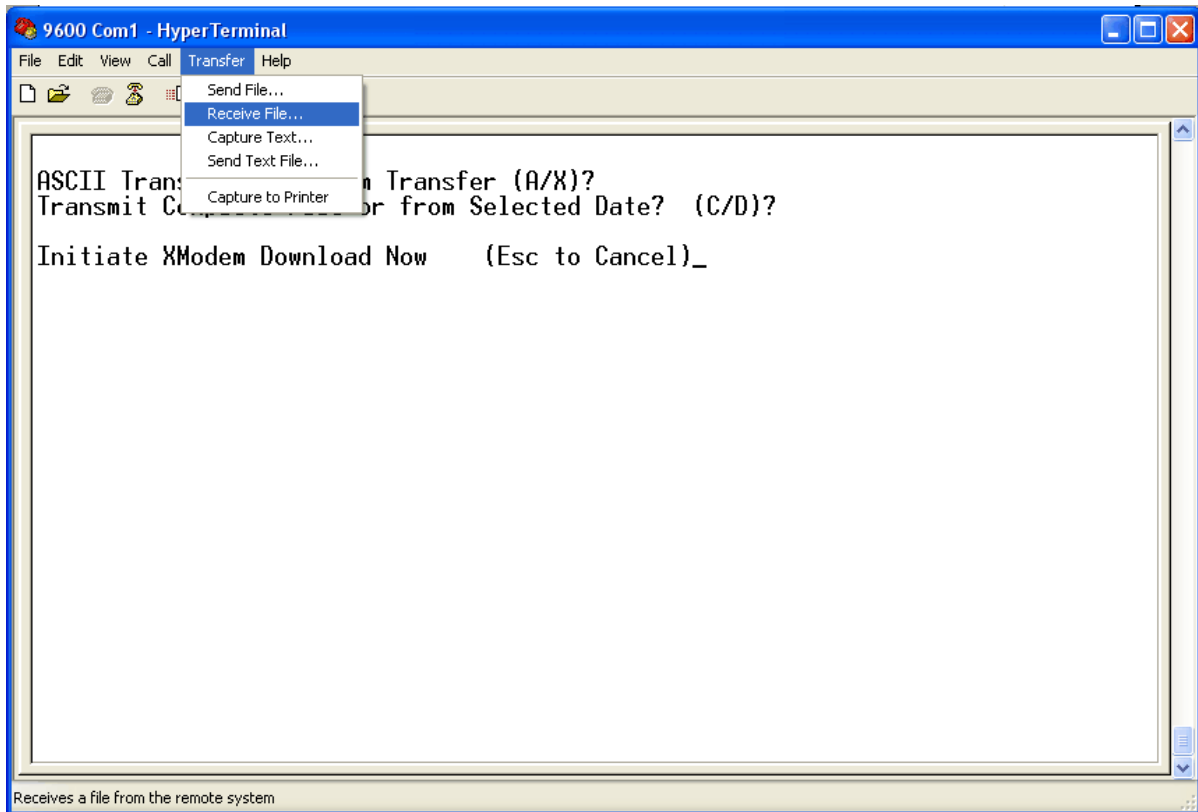
After stopping the capture option then press any key to return to data options menu.

## 1.4 XModem Transfer

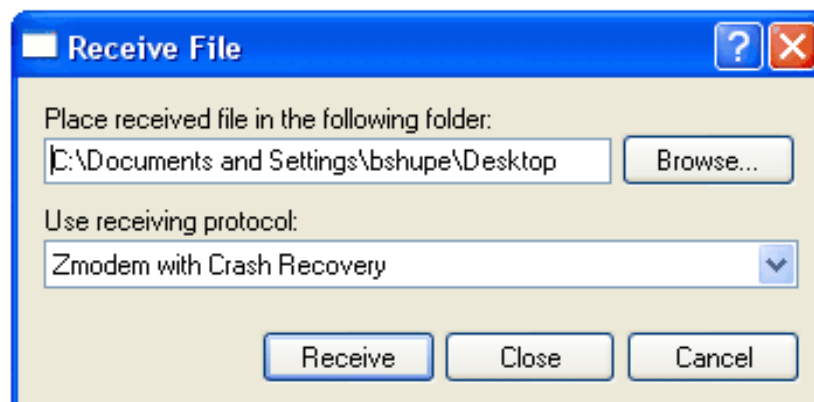
If the user selected the XModem format earlier the user will see the following prompt.

```
Initiate XModem Download Now      (Esc to Cancel)
```

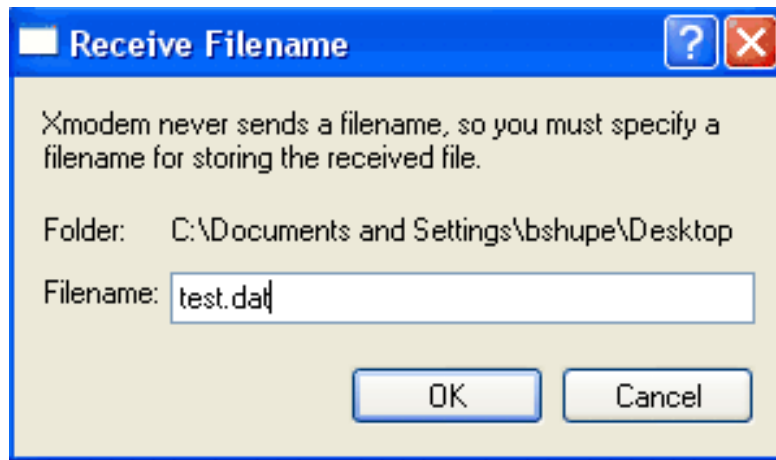
To initiate the XModem download the user must click on the *Transfer* option on the toolbar at the top of the screen and then click on the *Receive File* option. As shown below.



The user will then see the following screen. Click *Browse* to select the folder to put the received file into and then select Xmodem as the receiving protocol. Then click the *Receive* button.



The user will then see the following screen. The user needs to enter in the filename that is desired.



Then click on the *OK* button to start the transfer and the user should see the following screen until the transfer is complete then the screen will close.

